

M-Flex™



A Complete Solution: Idea to Printed Metal Part in Record Time

The M-Flex is simple to use and contains everything you need to get started with metal printing, offering speeds 10x faster than our previous generation machine.



Flexible & Complete Solution

- Package includes printer, recycling equipment, printing materials, curing oven and furnace
- Comprehensive multimedia training program

Simplifies Your Operations

- One click – simple user interface
- No tooling required
- Easy unloading

Industry-grade materials

- Print in stainless steel, bronze or tungsten
- Functional parts with superior wear characteristics

High productivity

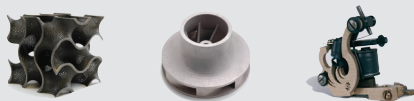
- Fastest metal printer in its class
- Flexible job box can print one prototype or short runs of multiple and/or custom parts
- Changes can be made quickly

High accuracy

Highly-accurate printing process guarantees highly-accurate parts

Suited for complex geometry

- Greater design freedom



TECHNICAL SPECIFICATIONS*

Process cell including job box and roller conveyor

Build volume	l x w x h 400 x 250 x 250 mm
Build speed	30-60 seconds/layer
Layer thickness	Variable with minimum of 0,15 mm
Print resolution	X/Y 0,0635mm, Z 0,100mm (set by layer thickness)
External dimensions	l x w x h 1675 x 1400 x 1855 mm (66 x 55 x 73 in)
Weight	1 020 kg (2 250 lbs)
Electrical requirements	208V-240V / 3 phases
Data interface	SLC, CLI, STL

CONSUMABLE MATERIALS

PM-S4-30-FX:	ExOne 420SS material for printing 0,10 mm layer thickness
PM-S4-60-FX:	ExOne 420SS material for printing 0,15 mm layer thickness
PM-S3-30-FX:	ExOne 316SS material for printing 0,10 mm layer thickness
PM-S3-60-FX:	ExOne 316SS material for printing 0,15 mm layer thickness
PM-I-FX:	ExOne bronze material used for infiltrating stainless steel
PM-TSP-FX:	ExOne thermal support powder used during furnace cycle
PM-B-MFlex-01:	ExOne binder, polymer based ink for use with ExOne materials
PM-C-MFlex-01:	ExOne cleaner, required for all automated and in-process maintenance routines, dissolves ExOne binder

All ExOne material systems are designed and engineered for the ExOne process and the ExOne M-Flex System. Each material system comprises ExOne's patented binder and specially prepared formulated materials to ensure the highest quality.

Currently available metals include 420 & 316 stainless steel & bronze, bronze and tungsten. Soda lime (semi-opaque) glass, sand and other casting media also available.

**We reserve the right to change or update the information on this datasheet at any time and without prior notice. Actual systems may differ from model shown.*